

DC voltage out, current out
Simple to use



High Precision DC AMP for DP-series probes

AMP100-XX

User's Guide

The contents of this manual could be different according to the software version and it can be changed without notice.

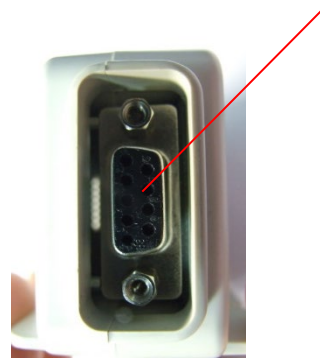
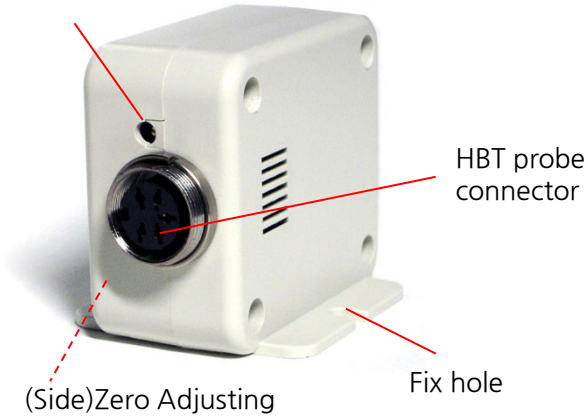
Please use this good after reading the manual thoroughly.

Product features & composition

1. Features (features could be different from pictures without notice.)

Span Adjusting

Power Input & Signal out port



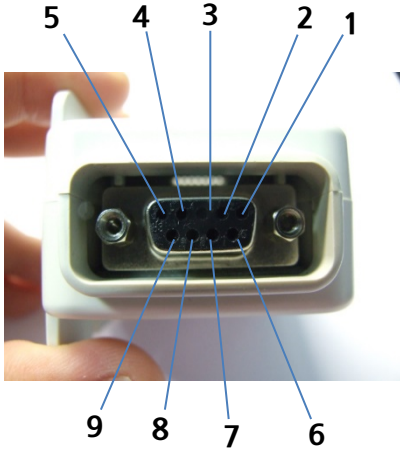
2. Models

AMP100-	A	1	
	1	2	3

1 : POWER	A	+/- 12V
	B	24V DC
2 : OUTPUT SIGNAL	1	0 ~ 5V
	2	-2.5V ~ +2.5V
	3	4 ~ 20mA
	4	0 ~ 10V
3 : INPUT SENSOR	NULL	4MM / 10MM STROKE
	A	25MM
	B	None
	C	OTHER COMPANY
	D	SPECIAL TYPE
	E	15MM
	F	2MM
G	1MM	

Product features & composition

3. Pin configurations

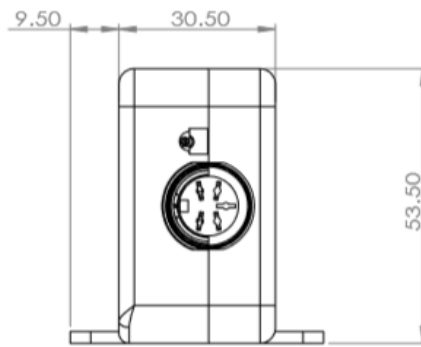
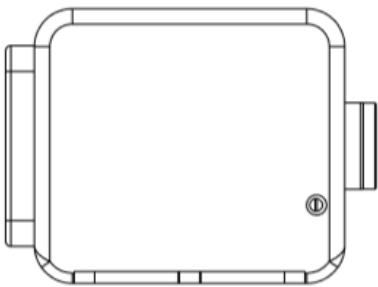
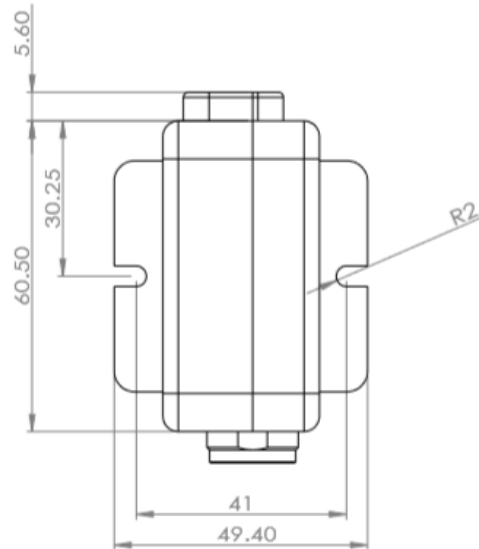


Pin Num.	1	2	3	4	5	6	7	8	9
*A1	-12 VDC		GND (Signal)		+12 VDC	SIGNAL OUTPUT (0~5V)			
A4	-12VDC		GND (Signal)		+12VDC	SIGNAL OUTPUT (0~10V)			
*B1			GND (Signal)			SIGNAL OUTPUT (0~5V)		0VDC	+24VDC
*B3			GND (Signal)				SIGNAL OUTPUT (4~20mA)	0VDC	+24VDC
B4			GND (Signal)			SIGNAL OUTPUT (0~10V)		0VDC	+24VDC

* Marked units are most common.

Product features & composition

4. Dimension



Specifications

1. General Specifications

DIVISION	GENERAL
MAIN SUPPLY	DC power (+/-12VDC or 24VDC)
OPERATING TEMPERATURE	5 ~ 40°C
RELATIVE HUMIDITY	Up To 70%
OPERATING CONDITION	NO CORROSIVE GAS AND DUST

2. Specifications

DIVISION		SPECIFICATION
LVDT/HBT SENSOR	CHANNELS	1ch
DIMENSION		W50×H54×D66(mm)
WEIGHT		80g
OUTER INTERFACE		DC voltage or DC current

High Precision DC AMP for DP-series probes

DONG-DO